



Fostering Youth Educational Success (YES!)

http://cfface.chass.ncsu.edu/Fostering_Yes/index.php

Center for Family & **Community Engagement**
<http://www.cfface.org>

Department of **Social Work**
<http://socialwork.chass.ncsu.edu/>

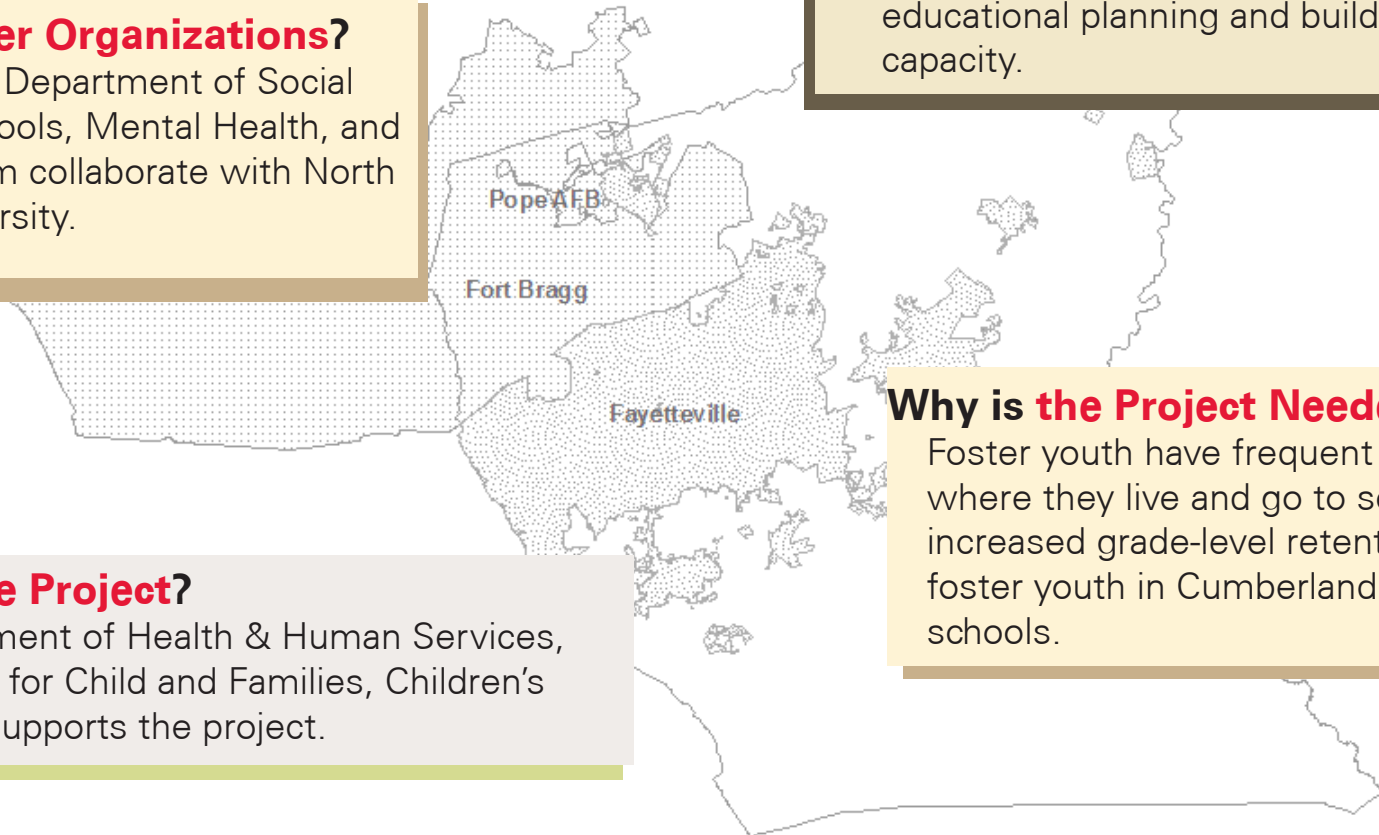


What is **Fostering YES?**

A project to support foster youth success in their school, home, and community. This project gives foster youth a say in their educational planning and builds community capacity.

Who are the **Partner Organizations?**

Cumberland County Department of Social Services, Public Schools, Mental Health, and County Court System collaborate with North Carolina State University.



Why is the **Project Needed?**

Foster youth have frequent changes in where they live and go to school, leading to increased grade-level retentions. On average, foster youth in Cumberland County attend six schools.

Who funds the **Project?**

A U.S. Department of Health & Human Services, Administration for Child and Families, Children's Bureau grant supports the project.